



SERIES 2067 – DRUM LIGHTING



ADVANTAGE

- Optical upgrading**
- Easy integration**
- Electrical safety**
- High endurance**
- Numerous versions**

PRODUCT FEATURES

- High level of illumination
- Small construction
- Protection class II due to double insulation
- Maintenance-free
- Different versions available for washing machines, tumble dryers, dish washers

EXAMPLES OF APPLICATION

- Washing machines
- Tumble dryers
- Dish washers

| | |
|--|--|
| Nominal current | 100 mA - 250 mA |
| Supply voltage | 3.1 V – 5.0 V |
| Luminous flux | Min. 35 lm (@100 mA) Min. 85 lm (@350 mA) |
| Color | White |
| Color temperature | 3,700 – 7,000 K 5,000 – 10,000 K |
| Operating temperature | 0 °C ... +85 °C |
| Electrical life | 3,000 h |
| Terminal type | Rast 2.5 plug; JST plug; Wire harness |
| Mounting | Fixation in sealing gaiter |
| Safety requirements | Double insulation for direct water contact |
| Protection class II according DIN EN 60335 | |

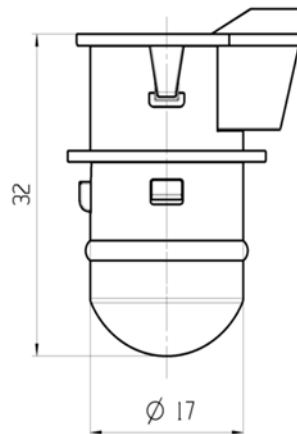


VARIANTS

| Type | Power supply | Current | Voltage | Luminous flux | Color temperature |
|-------------------------------|----------------------------|----------------|---------------|-------------------------|-------------------|
| 2067.xx High Power LED | Constant current source | Nominal 250 mA | Typ. 3.1 V | Min. 85 lm (@350 mA) | 5,000 – 10,000 K |
| 2067.xx Standard Power LED | Constant current source | Typ. 100mA | Nominal 5.0 V | Min. 35 lm (@100 mA) | 3,700 – 7,000 K |

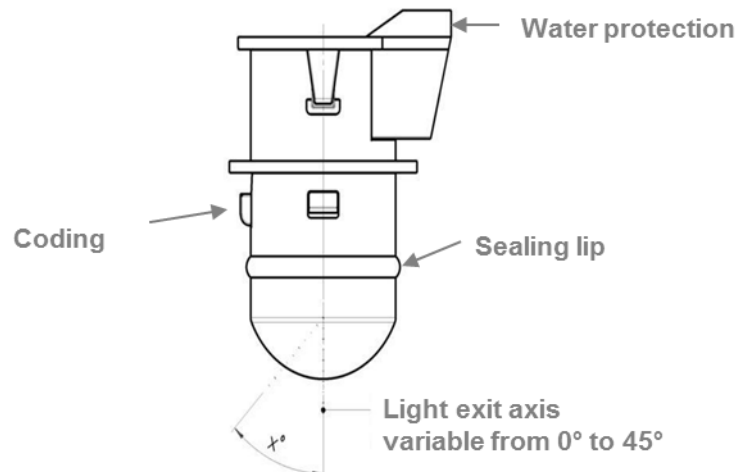
DRAWINGS

(Dimensions in mm)



Customer specific version available up to Ø 22 mm

EXPLANATION



MARQUARDT