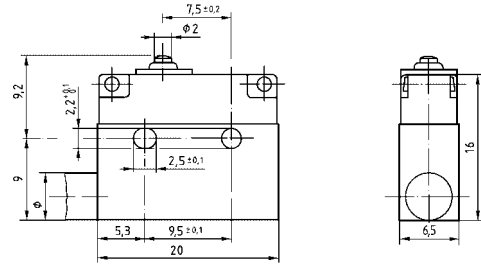


# SERIES MP420 & DERIVATIVES

## MP420

### SEALED SUB-MINIATURE MICROSWITCH IP67

The sealed sub-miniature MP420 microswitch is a simple snap-action changeover switch, which is connected by means of a cable directly, overmoulded into the housing.



#### GENERAL CHARACTERISTICS, MP420 TYPES & DERIVATIVES

Approval	: ASE
Degree of protection	: IP67
Class of protection	: II
Micro-switching	: $\mu$
Contact-gap	: 0,4 mm
Up to standard	: EN61058 identical to VDE0630
Frequent functioning	: 50E3
Mechanical life	: $50 \times 10^6$ operations
Snap-action mechanism	: Stainless steel traction spring with beryllium copper contact leaf, self-cleaning contacts.
Dimensions	: DIN 41 635, B-form
Actuators	: Stainless steel

Lever actuators snap on to the MP420 microswitch by pressing the lever onto the lugs on the housing. When doing this, care has to be taken not to break the lugs. Check to ensure that the actuator is properly positioned on the lugs and that the lever pivots without rubbing.

#### CONNECTIONS cable or free wires depending on the type

Isolating material	PVC	RXL155	PVC
Code in the reference of the article	MP430	MP440	MP450
Cable	<b>X</b>		<b>X</b>
Free wires		<b>X</b>	

## REFERENCE CODE OF THE ARTICLE

## SERIES MP420 & DERIVATIVES

	MP 43	0	-	7JB/	..	
	MP 44	0	-	8JAL/	..	D
	MP 44	1	-	8JBL/	..	FL
	MP 45	1	-	8JAL/	..	

Microswitch Basic type	↑	↑	↑	↑	↑	↑
Contact material if not silver Option 1 : gold-plated	↑	↑	↑	↑	↑	↑
Actuator	↑	↑	↑	↑	↑	↑

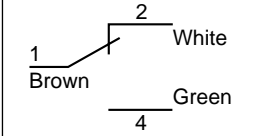
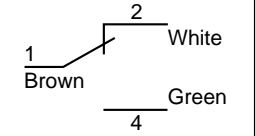
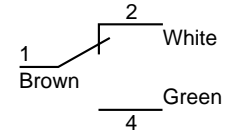
Cable outlet if not standard  
D : free wires below  
FL : free wires on the side,  
standard.

Length of the cable in cm

Housing:	PBT-ASA reinforced with glass fibre Auto-extinguishing according to UL94V-O	- 40°C to + 130°C
Membrane:	Fluorsilicone rubber MFQ	- 40°C to + 175°C
Cable:	PVC, grey sheath	- 20°C to + 70°C
Free wires:	RXL155, outlet D or FL (without identification)	- 55°C to + 155°C

## REFERENCE OF THE ARTICLE, SWITCHING RATING AND WIRING DIAGRAM

Depending on the material of the electrical contacts and on the section of the conductors

Reference of the article	MP430	MP440	MP450
Section of the conductors	0.34 mm <sup>2</sup>	0.25 mm <sup>2</sup>	0.14 mm <sup>2</sup>
Ag contacts	2A 250VAC	2A 250VAC	1A 250VAC
Gold-plated contacts	0,1A 24VAC/DC		
Wiring diagram			

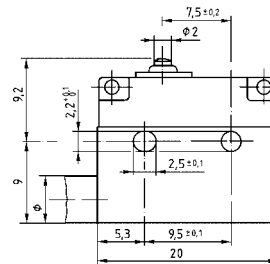
### REMARK:

The variant MP420, section of the conductors 0,50 mm<sup>2</sup> is cancelled, the demanded cable diameter is too big.

**CONNECTION**

By cables or supple wires

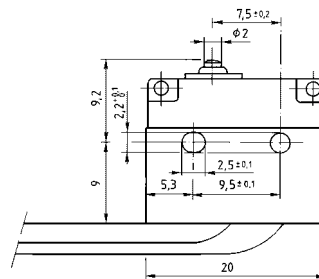
**Cable with standard outlet**



Examples :

- MP430-0/150
- MP450-0/200
- MP451-0/50

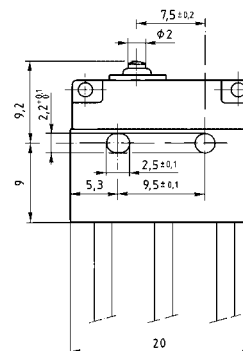
**Independent wire connection,  
standard side-outlet «FL»**



Examples :

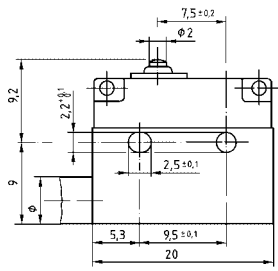
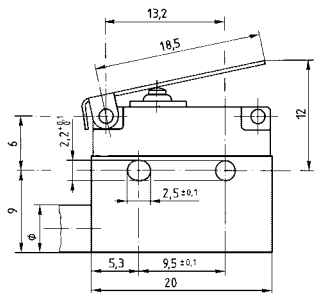
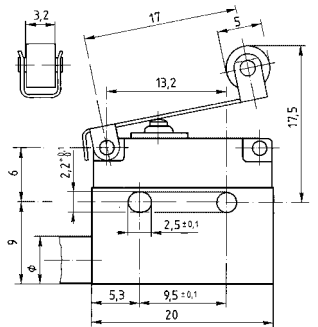
- MP440-0/50FL
- MP441-0/100FL

**Independent wires,  
underside outlet «D»**



Examples :

- MP440-0/50D
- MP441-0/100D

ACTUATING FORCE Fa max. (N)	RELEASE FORCE Fr min (N)	FREE POSITION Pr (mm)	OPERATING POSITION Pa (mm)	OVER-TRAVEL sr min. (mm)	DIFFERENTIAL MOVEMENT sd max. (mm)	DESIGNATION
2,5	0,5	9,2	8,4 ± 0,3	0,6	0,15	<b>MP430-0/..</b> <b>MP450-0/..</b> 
1,0	0,15	12,0	9,0 ± 1,0	1,2	0,60	<b>MP430-7JA/..</b> <b>MP450-7JA/..</b> 
1,0	0,15	17,5	14,8 ± 1,0	1,2	0,60	<b>MP430-8JAL/..</b> <b>MP450-8JAL/..</b> 
2,0	0,3	16,5	14,5 ± 0,6	0,8	0,40	<b>MP430-8JBL/..</b> <b>MP450-8JBL/..</b> 