

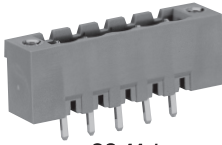
OS-42

cULus (FW2)

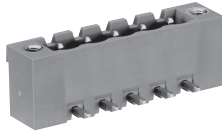
Ordering lot : 100pcs./Unit



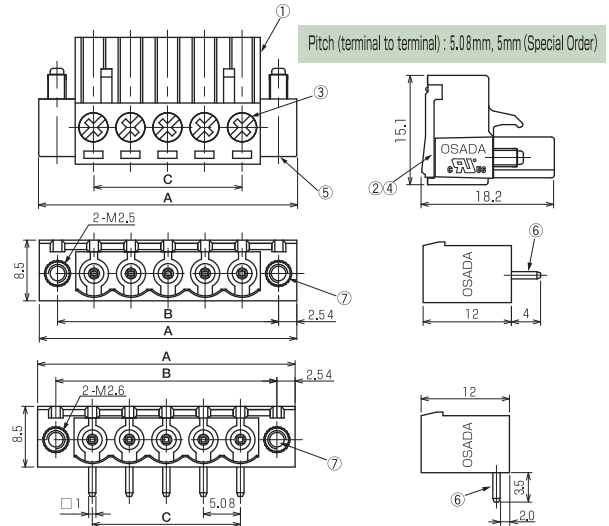
OS-42



OS-44-1



OS-44-2



Specifications

Electrical Rating	300V, 12A
Insulation Resistance	DC500V, 1000MΩ
Withstanding Voltage	AC2500V
Cable Range	AWG28~14 For 5mm pitch AWG28~12
Wire Strip Length	5mm
Storage Temperature Rating	-40°C~+80°C
Usage Temperature Rating	-40°C~+80°C
Terminal Block Color Available	Green

Composition

No.	Part Name	Materials	Flame Class	Treatment	Remarks
①	Base	PA 66	94V-0		Green
②	Spring	Phosphor Bronze		Sn	
③	Screw (M3)	Steel		Cr ³⁺ Zn	⊕ Screw
④	Contact	Brass		Ni	
⑤	Mounting Screw	Steel		Cr ³⁺ Zn	⊕ Screw
⑥	Terminal Pin	Brass		Sn	
⑦	Insert Metal Fittings	Brass			

Measurements List of A, B & C (P : Number of terminals) ○=Stock

P	1	2	③	④	⑤	6	7	8	9	10	11	12	13	14	15	16	17	18	19	20	
A		20.32	25.40	30.48	35.56	40.64	45.72	50.80													
B		15.24	20.34	25.4	30.48	35.56	40.64	45.72													
C		5.08	10.16	15.24	20.32	25.4	30.48	35.56													

