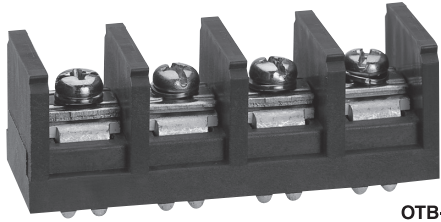
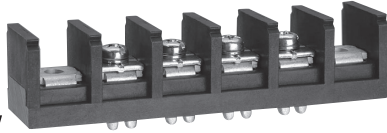


OTB-1100

Pitch (terminal to terminal) : 21mm

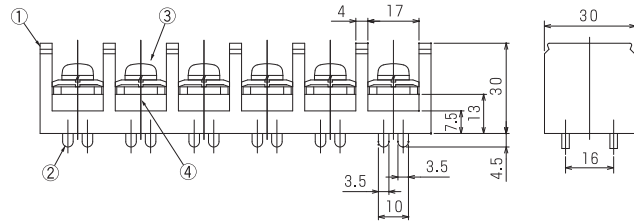
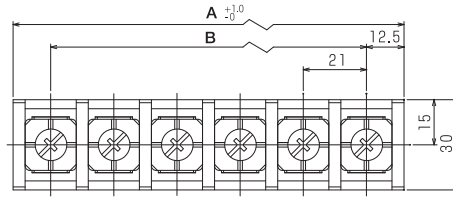


OTB-1100



OTB-1100-MW

※Instantly Detachable Cover (Optional)



Specifications

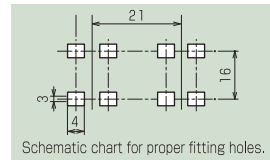
Electrical Rating	600V, 127A
Insulation Resistance	DC500V, 1000MΩ
Withstanding Voltage	AC2500V
Storage Temperature Rating	-40°C~+90°C
Usage Temperature Rating	-40°C~+90°C

Composition

No.	Part Name	Materials	Flame Class	Treatment	Remarks
①	Base	PBT	94V-0		Black
②	Terminal	Copper		Sn	
③	Screw (M3.5×8L)	Steel		Cr ³⁺ Zn	P Series
④	Hexagon Nut	Steel		Cr ³⁺ Zn	

Measurements List of A & B (P : Number of terminals) Special Order 11P~13P

	P	2	3	4	5	6	7	8	9	10	11	12	13	14	15	
B Type	A	46	67	88	109	130	151	172	193	214	235	256	277			
	B	21	42	63	84	105	126	147	168	189	210	231	252			
MW Type	A	88	109	130	151	172	193	214	235	256	277					
	B	63	84	105	126	147	168	189	210	231	252					



Schematic chart for proper fitting holes.