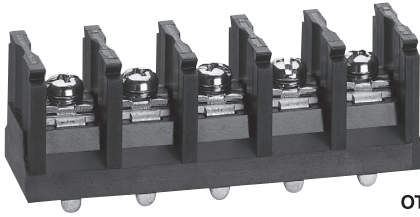
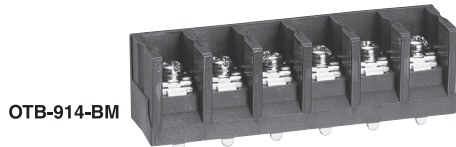


# OTB-914-B

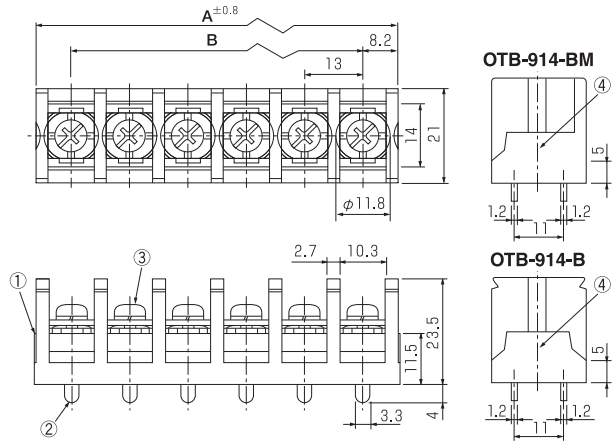
Pitch (terminal to terminal) : 13mm



OTB-914-B



OTB-914-BM



Specifications ※Instantly Detachable Cover (Optional)

|                            |                               |
|----------------------------|-------------------------------|
| Electrical Rating          | FW1:600V, 50A / FW2:600V, 40A |
| Insulation Resistance      | DC500V, 1000MΩ                |
| Withstanding Voltage       | AC2500V                       |
| Storage Temperature Rating | -40°C~+90°C                   |
| Usage Temperature Rating   | -40°C~+90°C                   |

Composition

| No. | Part Name        | Materials | Flame Class | Treatment            | Remarks  |
|-----|------------------|-----------|-------------|----------------------|----------|
| ①   | Base             | PBT       | 94V-0       |                      | Black    |
| ②   | Terminal         | Copper    |             | Sn                   |          |
| ③   | Screw (M4×10L)   | Steel     |             | Ni                   | F Series |
| ④   | Hexagon Nut (M4) | Steel     |             | Cr <sup>3+</sup> +Zn |          |

Measurements List of A & B (P : Number of terminals)

| P | 1 | 2    | 3    | 4    | 5    | 6    | 7    | 8     | 9     | 10    | 11    | 12    | 13 | 14 |
|---|---|------|------|------|------|------|------|-------|-------|-------|-------|-------|----|----|
| A |   | 29.4 | 42.4 | 55.4 | 68.4 | 81.4 | 94.4 | 107.4 | 120.4 | 133.4 | 146.4 | 159.4 |    |    |
| B |   | 13   | 26   | 39   | 52   | 65   | 78   | 91    | 104   | 117   | 130   | 143   |    |    |

