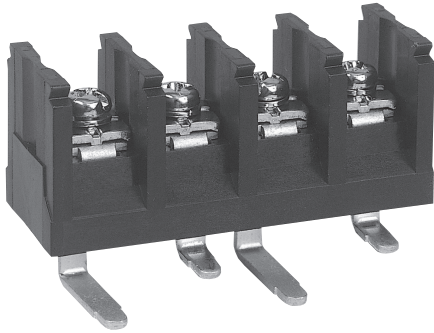
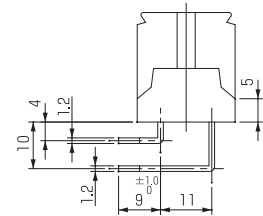
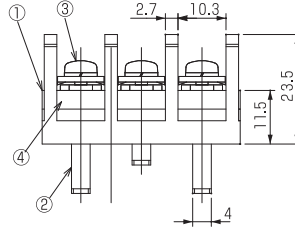
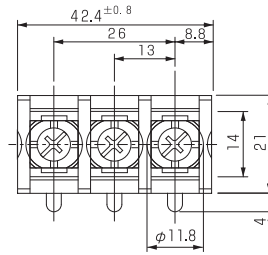


OTB-915-BL

cULus (FW2)



Pitch (terminal to terminal) : 13mm



Specifications

Electrical Rating	600V, 50A
Insulation Resistance	DC500V, 1000MΩ
Withstanding Voltage	AC2500V
Storage Temperature Rating	-40°C~+90°C
Usage Temperature Rating	-40°C~+90°C

Composition

No.	Part Name	Materials	Flame Class	Treatment	Remarks
①	Base	PBT	94V-0		Black
②	Terminal	Copper		Sn	
③	Screw (M4×10L)	Steel		Ni	F Series
④	Hexagon Nut (M4)	Steel		Cr ³⁺ Zn	

Measurements List of A & B (P : Number of terminals)

P	1	2	3	4	5	6	7	8	9	10	11	12	13
A		29.4	42.4	55.4	68.4	81.4	94.4	107.4	120.4	133.4	146.4	159.4	
B		13	26	39	52	65	78	91	104	117	130	143	

