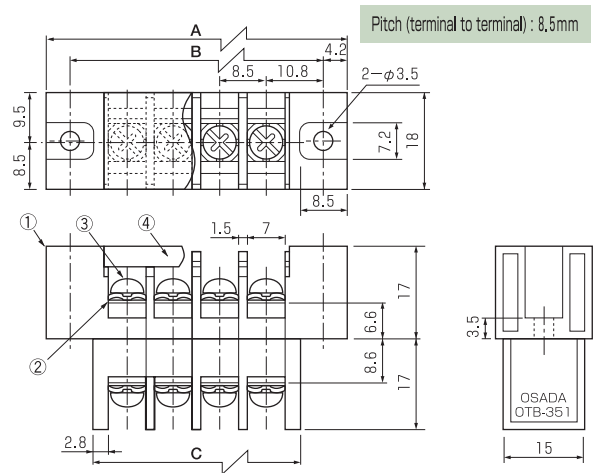
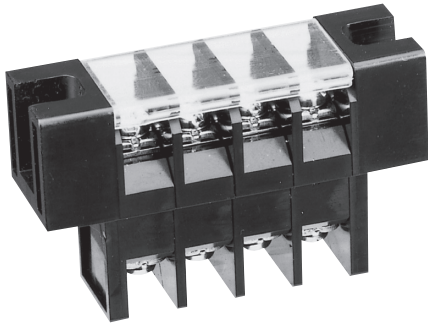


# OTB-351

UL<sub>us</sub> (FW2)



## Specifications

Electrical Rating	300V, 20A
Insulation Resistance	DC500V, 1000MΩ
Withstanding Voltage	AC2500V
Storage Temperature Rating	-30°C~+80°C
Usage Temperature Rating	-30°C~+80°C

## Composition

No.	Part Name	Materials	Flame Class	Treatment	Remarks
①	Base	Polycarbonate	94V-0		Black
②	Terminal	Brass		Ni	
③	Screw (M3, M3.5)	Steel		Ni	F Series
④	Cover	Polycarbonate	94V-0		Transparency

## Measurements List of A, B & C (P : Number of terminals) Special Order 13P~15P

P	1	2	3	4	5	6	7	8	9	10	11	12	13	14	15
A	30	38.5	47.0	55.5	64.0	72.5	81.0	89.5	98.0	106.5	115.0	123.5	132.0	140.5	149.0
B	21.6	30.1	38.6	47.1	55.6	64.1	72.6	81.1	89.6	98.1	106.6	115.1	123.6	132.1	140.6
C	12.6	21.1	29.6	38.1	46.6	55.1	63.6	72.1	80.6	89.1	97.6	106.1	114.6	123.1	131.6

