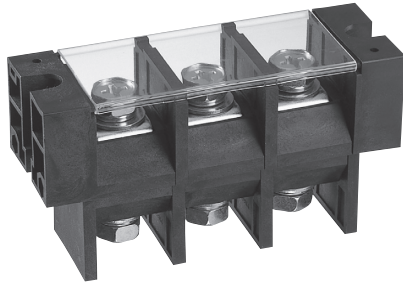
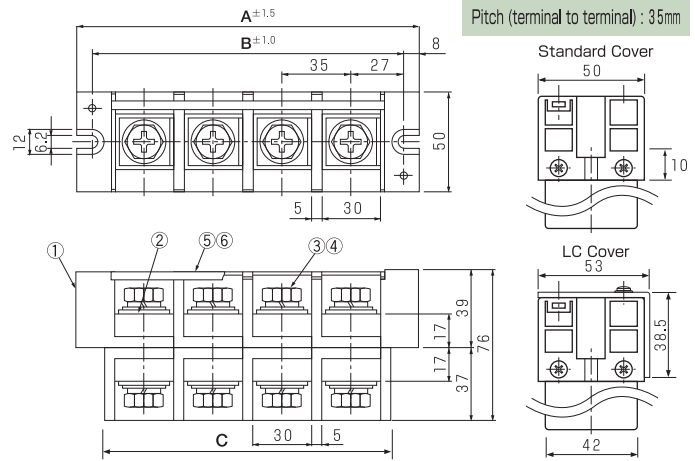


# OTB-588

c  us (FW2)



※LC Cover (Optional)



## Specifications

Electrical Rating	600V, 250A
Insulation Resistance	DC500V, 1000MΩ
Withstanding Voltage	AC2500V
Storage Temperature Rating	-40°C~+90°C
Usage Temperature Rating	-40°C~+90°C
Number of terminals	2P~10P

## Composition

No.	Part Name	Materials	Flame Class	Treatment	Remarks
①	Base	PBT	94V-0		Black
②	Terminal	Copper		Ni	
③	Bolt (M10×20L)	Steel		Cr <sup>3+</sup> Zn	PW, SW
④	Nut (M10)	Steel		Cr <sup>3+</sup> Zn	
⑤	Marking Strip				Optional
⑥	Cover	C	Polycarbonate	94V-0	
		LC	Polycarbonate	94V-0	

## Measurements List of A, B & C ( P : Number of terminals )

P	1	2	3	4	5	6	7	8	9	10	11	12
A	70	105	140	175	210	245	280	315	350	385	420	455
B	54	89	124	159	194	229	264	299	334	369	404	439
C	40	75	110	145	180	215	250	285	320	355	390	425

