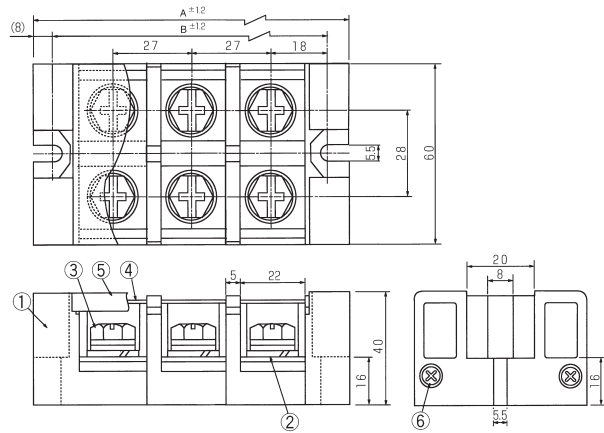
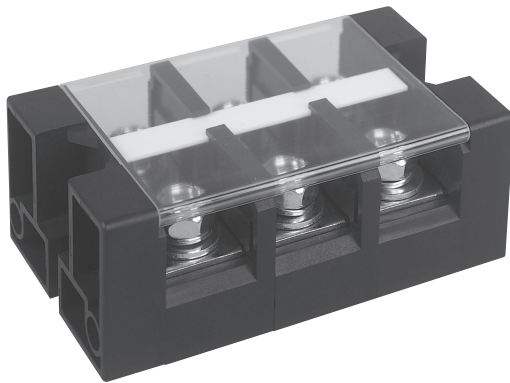


# OK-0100


 (FW2)  
 TÜV

SCCR 50kA

Pitch (terminal to terminal) : 27mm



### Specifications

|                            |                |
|----------------------------|----------------|
| Electrical Rating          | 600V, 150A     |
| Insulation Resistance      | DC500V, 1000MΩ |
| Withstanding Voltage       | AC2500V        |
| Storage Temperature Rating | -40°C~+90°C    |
| Usage Temperature Rating   | -40°C~+90°C    |

### Composition

| No. | Part Name        | Materials     | Flame Class | Treatment           | Remarks      |
|-----|------------------|---------------|-------------|---------------------|--------------|
| ①   | Base             | PBT           | 94V-0       |                     | Black        |
| ②   | Terminal         | Brass         |             | Ni                  |              |
| ③   | Bolt (M8×15L)    | Steel         |             | Cr <sup>3+</sup> Zn | SW·PW⊕       |
| ④   | Marking Strip    |               |             |                     |              |
| ⑤   | Cover            | Polycarbonate | 94V-0       |                     | Transparency |
| ⑥   | Joint Shaft (M4) | Steel         |             | Ni                  |              |

### Measurements List of A & B (P : Number of terminals)

| P | 1  | 2  | 3   | 4   | 5   | 6   | 7   | 8   | 9   | 10  | 11  | 12  |
|---|----|----|-----|-----|-----|-----|-----|-----|-----|-----|-----|-----|
| A | 52 | 79 | 106 | 133 | 160 | 187 | 214 | 241 | 268 | 295 | 322 | 349 |
| B | 36 | 63 | 90  | 117 | 144 | 171 | 198 | 225 | 252 | 279 | 306 | 333 |