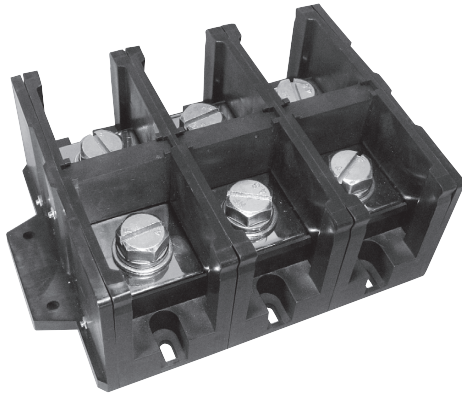


OK-600S

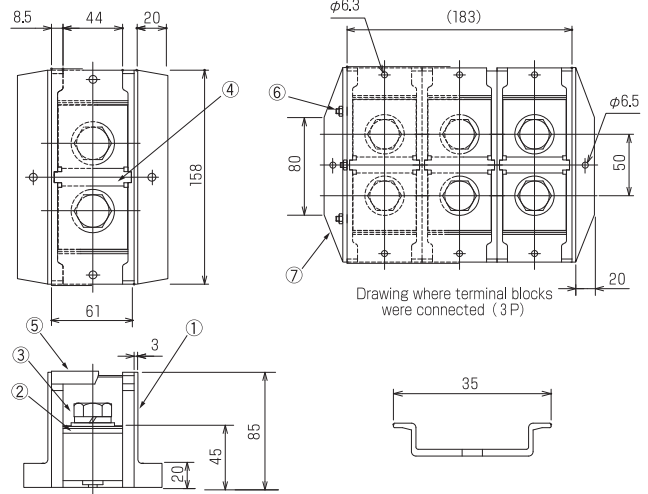
UL US (FW2) SCCR 50kA

PAT



- ※ 2~6 pole is connected with the shaft.
- ※ 2~20 pole is connected with the Din-rail (35mm).

Pitch (terminal to terminal) : 61mm



Specifications

| | |
|----------------------------|---|
| Electrical Rating | 900V, 600A (Use 2 ring-molding AWG250~350) |
| Insulation Resistance | DC500V, 1000MΩ |
| Withstanding Voltage | AC2500V |
| Storage Temperature Rating | -40°C~+90°C |
| Usage Temperature Rating | -40°C~+90°C |

Composition

| No. | Part Name | Materials | Flame Class | Treatment | Remarks |
|-----|---------------------|---------------|-------------|---------------------|----------|
| ① | Base | PBT | 94V-0 | | Black |
| ② | Terminal | Brass | | Ni | |
| ③ | Bolt (M16×40L) | Steel | | Cr ³⁺ Zn | SW·PW |
| ④ | Marking Strip | | | | |
| ⑤ | Cover | Polycarbonate | 94V-0 | | |
| ⑥ | Joint Shaft | Steel | | Ni | |
| ⑦ | Setting Metal Board | PBT | 94V-0 | | Optional |