

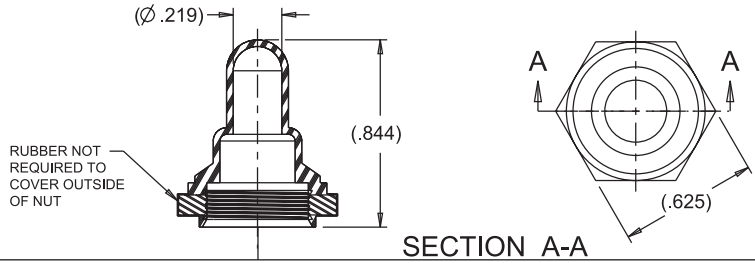
SWITCH BOOTS, TOGGLE BOOTS AND HEX NUTS

HARDWARE

740191

T9 Toggle Boot with 15/32" Thread

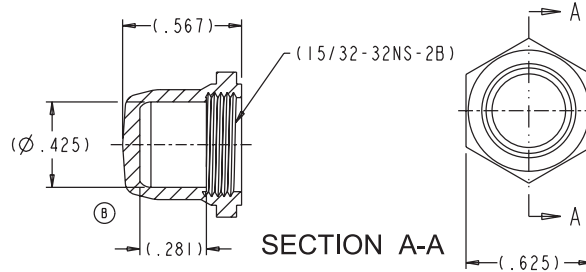
Boot: Black Silicone Rubber
Nut: Brass, Nickel Plated



P/N 740144

P4-4 Switch Boot with Threaded Insert

Boot: Black Silicone Rubber
Insert: Brass, Nickel Plated



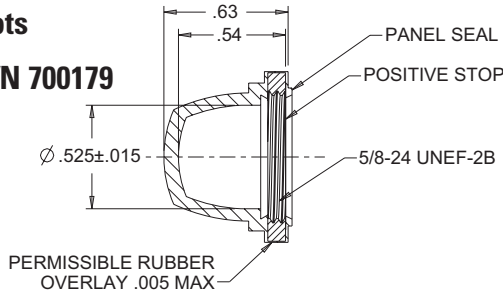
P3-6 Pushbutton Boots

P/N 700179

MIL-DTL-5423/7
Type B, Style 2, Size 4

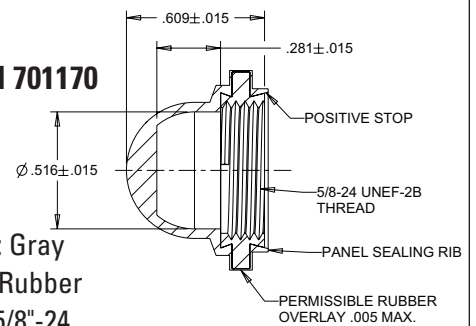
Material: Silicone
Rubber

700179-2S = Black, 700179-4S = Yellow, 700179-8S = Gray



P/N 701170

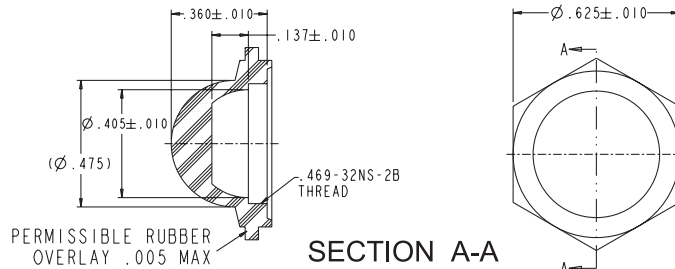
Material: Gray
Silicone Rubber
Thread: 5/8"-24



701211

P7-6 Pushbutton Boot Hex Nut

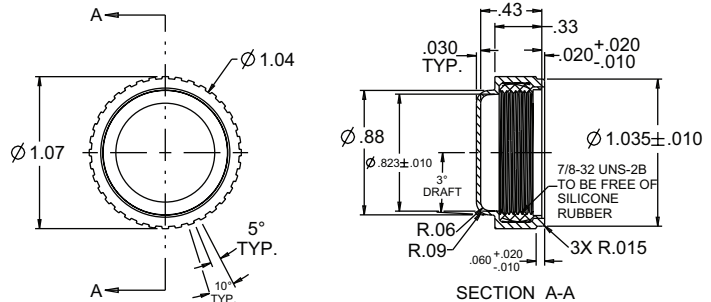
Material: Black Neoprene
Thread: 15/32"



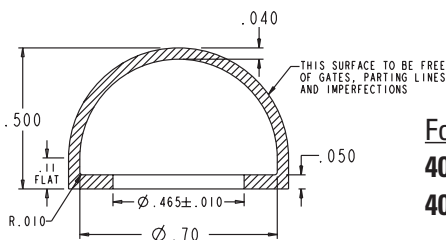
913786

Boot with Hard Stop Feature
for Custom P3's and P8's that have
Switch Buttons less than .78" Diameter

Boot: Clear Silicone Rubber
Insert: Clear Anodized Aluminum Threaded



P7/P9 Sealing Boots



For Raised Dome
402611-1 Clear
402611-2 Black

For Flush Dome
402599-1 Clear
402599-2 Black

