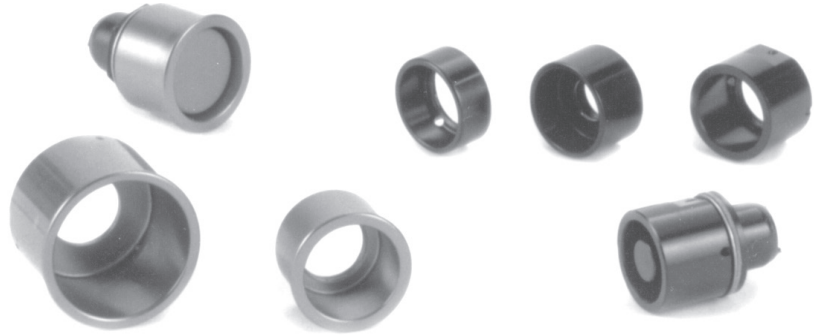


## SHROUDS, PANEL SEALS & MOUNTING HARDWARE

### Shrouds

Shrouds are added to pushbutton switches to guard against inadvertent actuation. The actuating device must be inserted into the shroud in order to actuate the switch. We have an assortment from which to choose shown here. We are also able to design and fabricate a shape to meet your specifications and application needs.



**Material:**  
Aluminum alloy, machined to specification.

**Finish:**  
Black anodized. For other color options, contact factory.

**OTTO P/N C300793**  
 Dimensions:  $\phi .875$ ,  $\phi .750$ ,  $.375$ ,  $.062$ , R.031,  $.625-24UNE\text{-}2B$  THD., R.020,  $R.015$ ,  $\phi .75$ ,  $\phi .875 \pm .015$ ,  $\phi .062$  THRU ONE SIDE ONLY,  $.538$ ,  $.445$ ,  $.040$ ,  $45^\circ \times .010$ ,  $15/32-32$  UNS 2B THRU, R.020 2 PLACES, R.031 2 PLACES.

**OTTO P/N C300428**  
 Dimensions:  $\phi .875$ ,  $\phi .75$ ,  $\phi .062$  THRU ONE SIDE ONLY,  $.538$ ,  $.445$ ,  $.040$ ,  $45^\circ \times .010$ ,  $15/32-32$  UNS 2B THRU, R.020 2 PLACES, R.031 2 PLACES.

**OTTO P/N C300302**  
 Dimensions:  $\phi 1.406$ ,  $\phi .626$ ,  $\phi 1.199$ ,  $1.000$ ,  $.937$ ,  $.063$ ,  $\phi 1.312$ ,  $.032$ ,  $\phi .875$ ,  $\phi .688$ ,  $5/8-24UNE\text{-}2B$ .

**OTTO P/N C300871**  
 Dimensions:  $.624$ ,  $.500$ ,  $.812$  ACROSS FLATS,  $.020$ ,  $.281$ ,  $\phi .875$ ,  $\phi .75$ ,  $.538$ ,  $.312$ ,  $.469-32UNE\text{-}2B$ .

**OTTO P/N C300426**  
 Dimensions:  $\phi .875$ ,  $\phi .75$ ,  $.538$ ,  $.312$ ,  $.469-32UNE\text{-}2B$ .

**Panel Seals**

Stainless steel cup washer with silicone rubber seal assures proper watertight panel seal. Mounts behind panel. Approved to MIL-DTL-5423/16. Designed for sealing 15/32" bushing with keyway.

OTTO P/N: 710196  
MIL P/N: M5423/16-01

Thickness of bushing seal is reduced to 0.080" when mounted to panel.

Gaskets		O-Rings (Buna)	
OTTO P/N	I.D.	OTTO P/N	I.D.
700117	0.250"	802568-010	0.250"
700110	0.469"	802568-015	0.500"
700109	0.625"	802568-016	0.625"

**Mounting Hardware**

MILITARY P/N	OTTO P/N	BUSHING SIZE (inches)
<b>KEYWAY WASHERS</b>		
MS25081-C0	710081-C0	0.250"
MS25081-C4	710081-C4	0.469"
MS25081-C6	710081-C6	0.625"
<b>INTERNAL TOOTH LOCKWASHERS</b>		
MS35333-135	710333-135	0.250"
MS35333-136	710333-136	0.469"
<b>HEX NUTS—STANDARD</b>		
MS25082-C14	710082-C14	0.250-40
MS25082-C21	710082-C21	0.469-32
MS25082-B11	710082-B11	0.625-24
<b>HEX NUTS—WIRE LOCKING</b>		
MS21340-04	710340-04	0.469-32
MS21340-05	710340-05	0.625-24