



GET IN TOUCH

The global leader in
human-machine communication

SWABIAN AND INTERNATIONAL PRESENCE



RAFI GmbH & Co. KG
D-88276 Berg/Ravensburg

● LYNNWOOD

The main plant, development, production and sales are based in Berg/Ravensburg.

The location in the south-west of Germany has become even more attractive for an internationally active company with the increasing integration of the European Union. The Lake Constance region has always had a strong international presence, and now finds itself in the heart of the EU market. Ease of access to the most important road and rail networks and a regional airport in Friedrichshafen both facilitate domestic and international business.

RAFI is represented in all important industrial locations worldwide either by its own subsidiaries or by contractually tied agents.

SALES

Our products are sold through global key account management, our own in-house staff and field service and a dense network of dealers and distributors. This means that we can always guarantee optimum customer communication, an essential prerequisite for rapid realisation of your wishes.



The RAFI group

RAFI

RAFI GmbH & Co. KG, D-88276 Berg/Ravensburg

Headquarters with development, logistics, production, marketing and social welfare

RAFI SYSTEC

RAFI Systec GmbH & Co. KG
D-88339 Bad Waldsee
Control systems

RAFI ELTEC

RAFI Eltec GmbH
D-88662 Überlingen
Electronics/EMS

RAFI DEKOTEC

RAFI Dekotec GmbH
D-78315 Radolfzell
Automotive control systems

RAFI

RAFI Italia S.r.l.
I-20040 Cambiago (Mi)
Components, control systems

RAFI

RAFI France s.à.r.l.
F-77220 Gretz-Armainvilliers
Components, control systems

RAFI

RAFI Hungaria KFT
H-5400 Mezötúr
Components, control systems,
electronics/EMS

RAFI

RAFI USA Inc.
Lynnwood, WA 98037
Components, control systems

RAFI

RAFI Electronics (Shanghai)
Co., Ltd. 201712 Shanghai
Components, control systems,
electronics/EMS

DEDICATED TO PROGRESS FOR MORE THAN A CENTURY

15 November 1900 The company is founded in Ravensburg as the "Optisches, mechanisches und elektrotechnisches Institut von Ernst Bucher". The purpose of the company is the development and production of switches and luminous call systems.

1908 Raimund Finsterhölzl (= RaFi), electrical engineer, acquires the company

1952 Change of name to "Rafi" Raimund Finsterhölzl, Elektrotechnische Spezialfabrik, Ravensburg. 64 employees, turnover EUR 0.8 million

1983 Development and production of flat data entry systems

1987 RAFI is integrated into Hoesch AG, later Krupp-Hoesch AG

1989 Start-up of the production units for sheet metal shaping, film technology and SMD mounting

1993 Establishment of the quality management system and its certification according to DIN EN ISO 9001. 650 employees, turnover EUR 51 million

1994 Spin-off from the Krupp-Hoesch group as a private undertaking

2002 New 10,000 m² production building, total useable floor space at the Berg site 33,500 m²

2005 Foundation of RAFI Systec GmbH & Co. KG, Bad Waldsee, takeover of RAFI Eltec GmbH, Überlingen (formerly Elcoteq)

2009 Takeover of Dekorsy GmbH, now RAFI Dekotec GmbH

2013 RAFI group: 2,100 employees



Pushbutton 1946



Modern control panel

RAFI'S GUIDING PRINCIPLES

RAFI sets the global benchmark as an innovative force in the field of communication between humans and machines.

RAFI stands out for its independence, healthy growth and earning power.

RAFI offers its customers leading international services.

QUALITY

RAFI's product quality is determined by customer requirements. Safety regulations, standards, legal provisions and the latest technical innovations are incorporated in the quality of every RAFI product as a matter of course. RAFI as a team is responsible for the quality of work under the common umbrella of the ISO 9001 certified quality management system.

ECOLOGY

Protection of the environment and careful stewardship of natural resources are key aspects of our corporate philosophy. Wherever possible we use recycled or recyclable raw materials for our production. The waste air from emissive production processes is cleaned in filter systems, before being released back into the atmosphere. We sort reusable materials in both production and administration and send them for recycling. We are very proud to say that our environmental management is certified in accordance with ISO 14001.



Product area

ELECTROMECHANICAL COMPONENTS



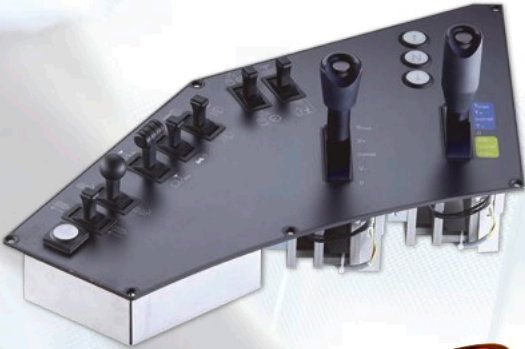
Electromechanical components of the highest precision for input, display and switching. Our PCB lines include: MICON, RACON and RF 15/19 short travel keyswitches. Other product lines include: our LUMOTAST pushbuttons, RAFIX control components, signal lamps and RS 76 full-travel keyswitches. Reliability and a long service life are paramount.



Product area
SYSTEMS

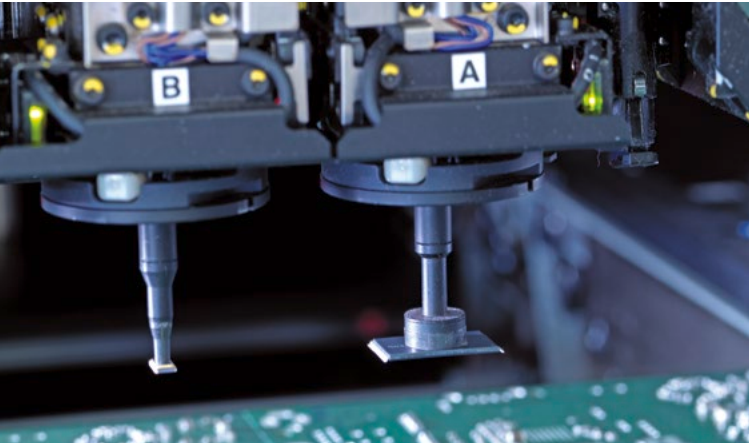


For complex solutions in the human-machine communication area, we develop and produce complete control systems with electronics and all necessary interfaces.



Product area

ELECTRONICS/EMS



With 15 SMT lines, the RAFI group ranks among the top 10 biggest contract electronics manufacturers in Germany. The highly efficient production network with sophisticated work processes and state-of-the-art systems engineering is the basis for quality and dependability of the highest order. As a global player, RAFI supplies not only flawlessly assembled and functionally tested PCBs, but also the comprehensive service of an internationally active organisation. RAFI will be there for you, from advising you on the layout through worldwide component sourcing, through the end of the life of your products.



Product area

AUTOMOTIVE



Customer-specific control systems for passenger and commercial vehicles. Ergonomic operating concepts, modern design and absolute dependability. Here, too, RAFI supplies high-quality control units, adapted to the specific demands of our automotive customers.

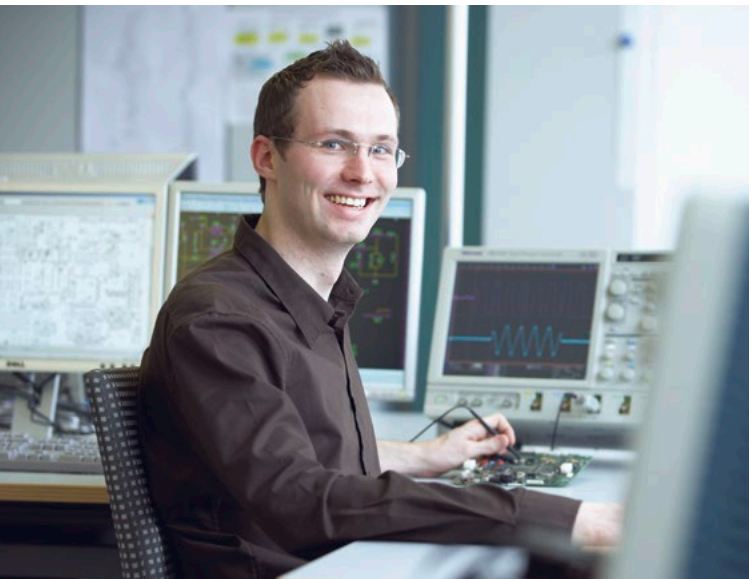
DEVELOPMENT

State-of-the-art technology for creative solutions



Our development expertise extends throughout the entire product lifecycle: from the mechanical, electronic and software development through test and operating materials necessary for successful product launch and continuous support.

This is where the decisive steps for the efficient and economical manufacture of your products are taken. We work hand-in-hand with you to elaborate all steps and techniques from the basic concept to the system specification and logistical implementation.



MATERIALS MANAGEMENT

Just in time



Our materials management does not confine itself to taking care of just-in-time delivery of your products. Sourcing of the necessary raw materials and components on the international market is every bit as important. And because we are thoroughly familiar with our specialized field, we are able to procure the optimum quality on the most favourable terms.

To ensure precise production and delivery, the organisation has to function every bit as precisely. That's why we base our IT on SAP.

For customer orders we use EDIFACT (Electronic Data Interchange For Administration, Commerce and Transport). This provides a standard for exchanging data between customers and suppliers. Our customers' order data can communicate directly with our ordering system, reducing time and potential errors.



PRODUCTION

Take a look around for yourself

Our production methods are designed to both economic and environmental standards. Our goal is to achieve a defined quality standard with optimum efficiency as well as careful stewardship of natural resources and maximum environmental compatibility.



THT soldering baths



Testing



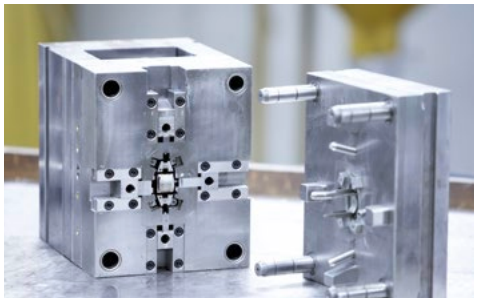
Machine tools



CNC sheet metal shaping centre



Injection moulding machines



Toolmaking



Automated assembly lines for short travel keyswitches



Screenprint machines for printing films



SMT production lines

APPLICATIONS



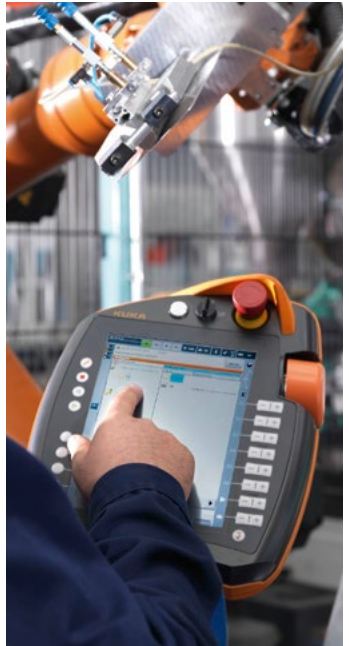
Healthcare electronics



Mechanical engineering



Consumer goods



Measurement and control systems



Special mechanical engineering



Appliance industry



Automotive industry



Elevator and transport systems



Telecommunications

**Simply copy and fax or request online
at www.rafi.de/kontakt**



YES,

I would like to know more about RAFI.
Please send me your latest information on:

- Electromechanical components
- Systems
- Electronics/EMS
- Automotive

Company

Department

Name

Street

City/ State/ Zip Code

Telephone/ Fax

E-mail

Internet

Your RAFI partner:

04/2014

RAFI GmbH & Co. KG

D-88276 Berg/Ravensburg

Tel.: +49 751 89-0, Fax: +49 751 89-1300

www.rafi.de, info@rafi.de